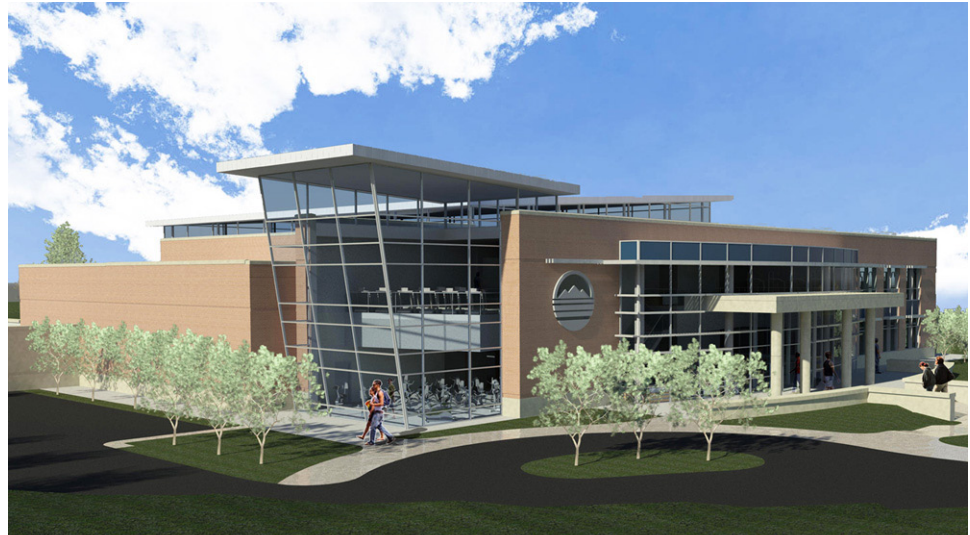


NEW RECREATION FACILITY AT BLUE RIDGE COMMUNITY COLLEGE

BRCC Building a New Recreation Facility, Based on LEED Version 3

Size: 35,037 SF
Budget: TBD
Bid: TBD
Est. Completion: July 2012



Blue Ridge Community College will soon be home to a new 35,000-square-foot recreational facility, which will provide students, staff, and the community with recreational and social spaces. The main level of the facility will feature a game room with billiards and table tennis, fitness area, gymnasium, racquetball courts, locker rooms, and multipurpose rooms. A second fitness area, as well as lounge, running track, and free weight area, will occupy the facility's mezzanine level.

Sustainable design standards being incorporated into the design and construction of the facility will enhance the indoor environment and provide healthier surroundings for students, staff, and visitors. LEED Version 3 is being used to guide sustainable design decisions. Sustainable features of the project include:

- protection of historic trees and site restoration with native and adaptive landscaping;
- highly-reflective paving and shading of paved surfaces to reduce the Heat Island Effect;
- white membrane and light-colored metal roofing to help reduce building cooling loads;
- triple-glazed windows with a low-E coating to increase energy efficiency;
- submeters for electricity, gas and water that allow the college to monitor use and savings
- an educational dashboard that displays the submeter information;
- reduced-flush urinals and toilets, as well as low-flow showers to decrease water use by at least 30 percent; and
- green cleaning and an integrated pest management programs to reduce chemical use.