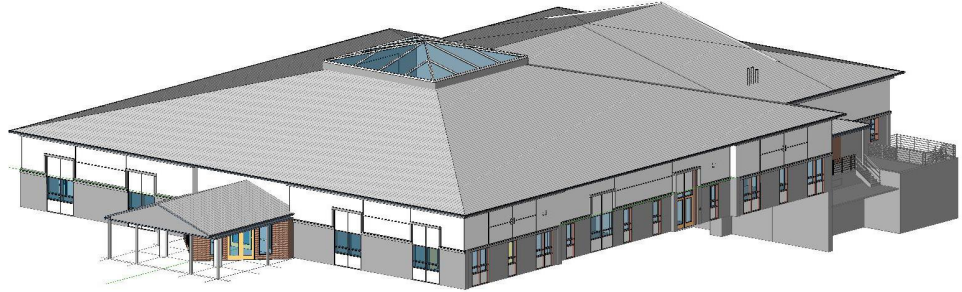


# DEPARTMENT FOR THE BLIND AND VISION IMPAIRED ADMINISTRATION/ACTIVITIES BUILDING RICHMOND, VA



*Size: 23,720 S.F.  
Budget: \$4,272,600  
Bid: \$3,117,00  
Est. Completion: 2012*

The Administration/Activities Building is located at the Rehabilitation Center for the Blind & Vision Impaired in Richmond, Virginia. The Center teaches blind persons strategies and skills to adapt to living without sight, and teaches people with partial blindness ways to use their remaining sight more effectively. The project includes the full renovation of the existing building and two small, new additions. The renovation includes a completely new interior, a new roof, upgraded windows, and new mechanical, plumbing, and electrical systems. In accordance with the Virginia Energy Conservation and Environmental Performance Standards, sustainable features were incorporated into the building design and construction where feasible and appropriate. Additionally, the project is pursuing Leadership in Energy and Environmental Design (LEED®) certification at the Silver level. High-performance and sustainable features include:

- abatement of hazardous materials such as asbestos and lead-containing paint;
- reducing potable water use by excluding permanent irrigation systems and installing low-flow plumbing fixtures that use approximately 30 percent less water;
- reducing energy use by about 20 percent by replacing outdated mechanical and electrical equipment, and upgrading the thermal efficiency of the roof;
- using new building materials manufactured with recycled content, and that are regionally produced;
- protecting indoor air quality by using low-emitting building materials, filtration, and high-efficiency HVAC systems, providing separate exhaust and physical separation for chemical storage areas;
- providing a high level of lighting control for adjustment to various tasks, and comfort of employees at their work stations; and
- designing the building to maintain thermal comfort, and verifying performance by conducting a post-occupancy survey.